

# Developing the Age of Exploration



2019/2020

## Annual Report



Head Start Childhood  
Development Centers  
512.451.7361  
[www.childinc.org](http://www.childinc.org)

*Serving Travis County Families Since 1972*



# TABLE OF CONTENTS

Welcome From The Executive Director	3
The School Ready Child	4
Approach to School Readiness	5
Curriculum	6
Child & Teacher Outcomes	8
Health Services	9
Service & Family Statistics	10
Parent Family & Community Engagement	11
Program Service Sites	12
Financial Reports & Audits	13
Program Leadership	14

## VISION

To create a community where all children regardless of income have an equal opportunity to become independent and self-sufficient adults.

## MISSION

Provide high quality education and comprehensive support services for children and their families while supporting personal and social responsibility in the communities we serve.

$$1 + 1 = 2$$

$$2 + 2 = 4$$

The 2019 Head Start operational year began with the same enthusiasm as the past 47 years. Offering quality early childhood and family services in the Austin/Travis County service area. We remain proud partners of Travis County's early childhood community. Our Child Inc team of administrators and staff continue to forge forward in working to offer comprehensive early learning education programs for over 1,400 infants, toddlers, pregnant women and preschool children, including children with disabilities. Our teaching teams prepared child friendly early childhood classrooms inclusive of early learning technology, our family engagement team designed a calendar filled with family engagement and support programs, and staff development provided for continued high quality early childhood education and support services.

As with many other young children and their families, the 2019-2020 school year was interrupted due to the Governor's Executive Order of emergency closure of schools and centers in an effort to protect the health, safety, and welfare of children and the public from the COVID-19 pandemic. We understand that the closure of Head Start and Early Head Start centers placed difficult burdens on parents. Please know that the health and safety of children, staff and loved ones are our top priority. As we continue to move through the uncertainty of the effects of COVID-19, we want to assure our community of Child Inc's role in continuing to offer quality early childhood education services and support services. Our Head Start and Early Head Start services have been modified, but we're still here to serve you.

While quality classroom time was lost, we are grateful to our resilient Child Inc team of staff for coming together and implementing a plan for remote educational experiences. Our teams remained in contact with families to help them navigate resources that are offered throughout our community. Child Inc Head Start and Early Head Start programs received quality improvement funds to implement a comprehensive, ongoing trauma-informed approach to help families support development and at home learning and to offer an avenue to help address trauma related issues.

We are excited to share this report to the public as an awareness of the dedication and accomplishments of the Child Inc Board of Directors, Policy Council, parents and staff. It is my privilege to work amongst such a dedicated group.

In health & gratitude,

**Albert L. Black, Executive Director**





# SCHOOL READY CHILDREN



abcdefghijklmnopqrstuvwxyz

Children will demonstrate an increase in their initiative and curiosity toward learning while improving their attentiveness and persistence in completing tasks. In addition to an increased ability to recognize, understand and analyze situations to seek solutions.





# APPROACH TO SCHOOL READINESS

High-quality, comprehensive early education, along with nurturing and supportive relationships with parents and caregivers, improve school readiness with long-term outcomes of disadvantaged children.

Child Inc addresses the needs of the whole child providing not only a cognitively stimulating and emotionally supportive learning environment for children ages birth to five, but also addressing children's health needs by providing health services, nutritious meals and snacks, hearing and vision screenings, and opportunities for exercise and rest.

The approach includes five developmental domains associated with early development and learning: physical well-being and motor development, socio-emotional development, approaches to learning, language development, and cognitive and general knowledge. Each child receives an individualized educational program based on his/her strengths and needs.

In addition, Head Start supports parents in being their child's first and most important teacher and advocate. As a two-generation program, Child Inc creates opportunities for both parents and very young children, helping parents improve their prospects for economic security while simultaneously ensuring their children are on a solid path from the earliest age to engage in lifelong learning.

Children leave Head Start prepared for kindergarten, excited about learning, confident in their own abilities and ready to succeed.



# CURRICULUM

## PRIMARY CURRICULUM

Creative Curriculum  
Scholastic Big Day

## SUPPLEMENTAL CURRICULUM

Second Step  
CATCH  
CATCH Healthy Smiles

Our goal is to implement a comprehensive curriculum that meets the needs of the children in our program. Creative Curriculum is the foundation for our preschool learning environments and the guide for how children develop and learn. The Child Inc Head Start program helps young children become school ready. Child Inc ensures that by the time children leave our Head Start program, they are prepared to succeed in school because they have the social, emotional, cognitive, language and physical developmental skills needed in their next school setting. In the Child Inc program, teachers individualize learning for every child. Child Inc provides emotionally responsive teaching practices that help children form strong relationships and experience positive interactions with teachers and classmates. The educational support young children receive at Child Inc provides them with a “Head Start” and positions them for later success in school and in life.

The Child Inc Head Start Program uses the Teaching Strategies GOLD (TSG) assessment instrument to monitor children’s progress in all areas of child development. This information about how children are developing is used to plan daily activities and classroom experiences that further foster the children’s development. Each child’s developmental progress is formally assessed three times a year. The results of a child’s assessment are shared with parents during a parent conference and home visits. Parent conferences occur three times a year--in the fall, winter and spring. Home visits are conducted twice a year – in the fall and spring. As parents see their child grow and develop at Child Inc, they become more knowledgeable about how children learn and better positioned to advocate for their child in future school settings.

The curriculum Child Inc uses in the classroom is aligned with the agency’s School Readiness Goals as well as the Texas Pre-K, Texas Kindergarten, the Texas Infant, Toddler and the Three-Year Old Early Learning Guidelines. Child Inc has adopted Creative Curriculum for its infants, toddlers and three-year-olds. Scholastic Big Day curriculum is used with four-year-olds and Partners for a Healthy Baby curriculum is used in the agency’s Early Head Start Home Visitor program.

The Teaching Strategies Gold (TSG) Assessment Tool captures children’s growth over nine domains and 38 learning objectives. Throughout the year, the teaching staff use the children’s assessment data to individualize lesson plans, whether in the classroom or on a home visit. Children needing additional support in a particular domain are provided with specific activities that are designed to strengthen their growth and development in that domain. Parents and teachers work together to help children grow at school and at home.

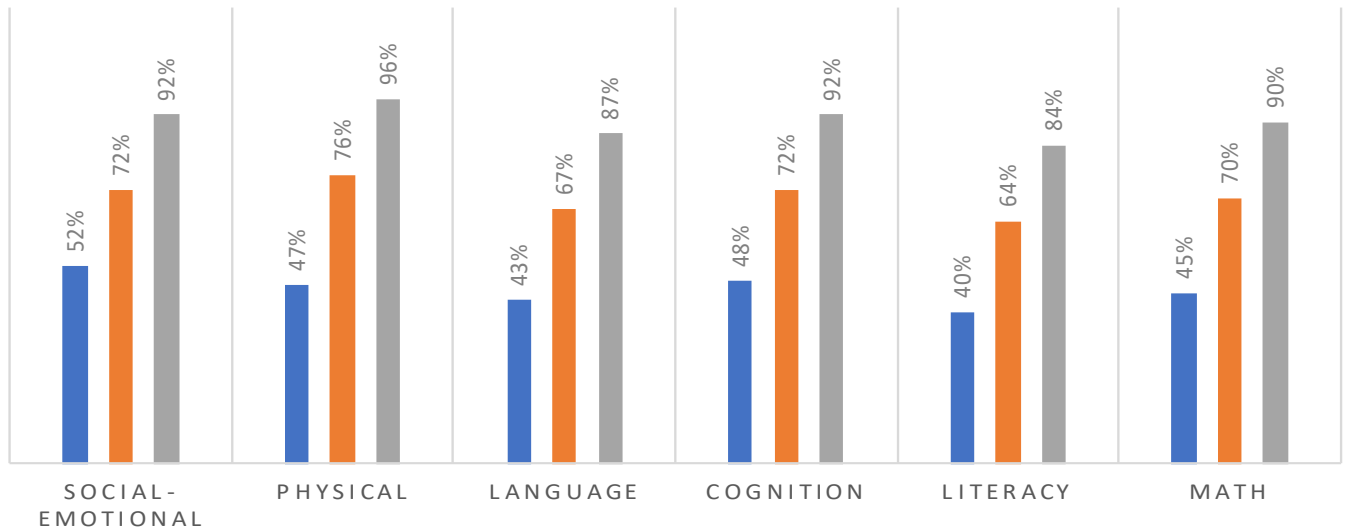
In March 2020, Child Inc closed its child development centers due to the COVID-19 pandemic. Children and parents were provided virtual educational activities from mid-March through the end of school in May. Before the pandemic closures, the middle-of-the-year (MOY) child assessment data showed 1,358 children were assessed by teachers using the Teaching Strategies Gold (TSG) assessment instrument. During the 2019-20 school year, 53% of the children were male and 47% were female. Children who were part of the Early Head Start (EHS) program represented 24% of enrolled children—increasing by 12% from the previous school year. Prekindergarten children (3 and 4 years) represented 76% of the enrolled children—decreasing by 12% from the previous school year.



# CHILD OUTCOMES

## CHILD ASSESSMENT DATA: 2019-2020 MEETS AND/OR EXCEEDS EXPECTATIONS

■ BOY ■ MOY ■ Projected EOY

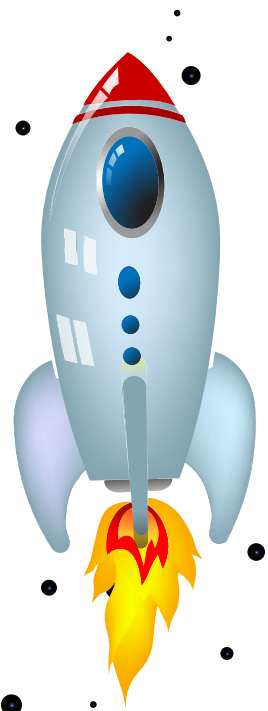


## ANALYSIS

On the basis of the Teaching Strategies Gold (TSG) data up to spring break, children were demonstrating growth in all domains. On average, children showed 24% more growth between the BOY and EOY assessment windows—or from the fall through the late winter. Using a conservative rate of 20% growth from late summer through late winter, the **grey bar indicates a projection of children's** growth to the end of the school year. Based on previous years of child assessment data, Child Inc children were on track to meet or exceed previous levels of growth and development.

## TEACHER OUTCOMES

Child Inc utilizes the Classroom Assessment Scoring System (CLASS) to evaluate classroom quality and the interactions between children and teachers. As an observational instrument, CLASS meets the regulations cited in the 2007 Head Start Act, which mandates that a research-based observational tool be used to help teachers improve their classroom practices. The Office of Head Start maintains that positive teacher-child interactions are important, and research shows that positive adult-child interactions are key forces that support successful early development and learning in the child and in the early childhood classroom. The CLASS instrument is used to assess teachers' best classroom practices twice a year.





# HEALTH SERVICES

## HEALTH & NUTRITION

Children need to be healthy to learn and develop, so we help families identify a medical and dental home, receive age-appropriate preventative services, and apply for benefits they qualify to receive. Providing nutritious meals and snacks to children is a fundamental Head Start service.

## MENTAL HEALTH

Child Inc's Mental Health component encompasses a program wide culture of wellness that promotes the mental health and social emotional well-being of children, families and staff. Child Inc has an on-site mental health department with licensed and bilingual mental health professionals who provide consultation, counseling and support for all of our program options. Through contributions and collaborations with community partners such as the United Way for Greater Austin, Austin Child Guidance Center, and the University of Texas' Department of Educational Psychology doctoral program, our children and families have access to no cost mental health services in multiple languages.

When the COVID 19 pandemic struck in the spring of 2020, Child Inc's mental health team continued to provide comprehensive mental health support for our children, families and staff. In house referrals for mental health support were serviced virtually via phone calls and telehealth visits.

## DISABILITIES

Child Inc served 76 Head Start children with an Individual Education Plan (IEP) from the local school districts accounting for seven percent of enrollment as well as 56 Early Head Start children with Individual Family Service Plan (IFSP) with an Early Childhood Intervention Agency, equating to 16% of enrollment. The agency served 9.2% of children (132) with documented intervention plans from agencies responsible for providing services through the Individual Disabilities Education Act (IDEA). There is no specific medical test to diagnose autism spectrum disorder in children 0 to 5 years of age, doctors assess the child's developmental history and behavior to make a diagnosis. These children are mainly diagnosed with a speech impairment or pervasive developmental disorder in children less than 3 years of age.

The agency served 67 children with a speech impairment, 4 with autism, 5 with multiple disabilities and 56 with pervasive developmental disorder – not otherwise specified. (PDD-NOS)



# SERVICE & FAMILY STATISTICS



1

## FAMILIES SERVED

Early Head Start - 347  
Head Start - 1152  
Childcare Partnership - 62

## CHILDREN SERVED

Early Head Start - 378  
Head Start - 1209  
Childcare Partnership - 65

2

## ELIGIBLE FAMILIES SERVED\*

Early Head Start - 97%  
Head Start - 91%  
Childcare Partnership - 99%

\*130% Over Federal Guidelines

## AVG MONTHLY ENROLLMENT

Early Head Start - 100%  
Head Start - 97%  
Childcare Partnership - 100%

3

## AVG MONTHLY ATTENDANCE

Early Head Start - 100%  
Head Start - 98%  
Childcare Partnership - 100%

## NUMBER OF VISITS & CHECK INS

Early Head Start In Person - 3,415  
Early Head Start Virtual - 2,492  
Socializations - 14

4

## DENTAL SERVICES

Early Head Start - 32%  
Head Start - 84%

## HEALTH/WELLNESS SERVICES

Early Head Start - 59%  
Head Start - 71%

5

## TRAVIS COUNTY ELIGIBLE CHILDREN UNDER 5

Low Income Households 31,372  
Served by Head Start - .05%

## DISABILITIES SERVICES

Across All Programs - 9.2%



# PARENT FAMILY & COMMUNITY ENGAGEMENT

Parent and Family Engagement in Head Start is about building relationships with families to support family wellbeing, strong relationships between parents and their children, and ongoing learning and development for both parents and children. The Parent, Family, and Community Engagement (PFCE) Framework is a road map for progress in achieving the kinds of outcomes that lead to positive and enduring change for children and families. Parent and family engagement activities are grounded in positive, ongoing and goal-oriented relationships with families. When parent and family engagement activities are systemic and integrated across program foundations and program impact areas, family engagement outcomes are achieved, resulting in children who are healthy and ready for school.

Child Inc makes a special effort to include parents in the education of their children. This is accomplished through parent-teacher conferences, home visits, providing services in the family's home language, parent-child take-home activities, the Ready Rosie parenting curriculum, encouraging father involvement, and the family partnership process. All parents are also encouraged and supported to volunteer in their child's classroom.

A powerful new tool to encourage parent engagement is ReadyRosie. ReadyRosie is an education tool for parents and offers hundreds of videos of learning activities as well as other resources, in English and Spanish. These are delivered to parents on their mobile phone or computer. The many topics include building a literacy-rich home environment, positive discipline strategies, healthy routines, language development, developmental milestones, fostering play, and social-emotional development. Teachers can communicate instantly with parents and can customize and individualize educational content for parents as desired. A digital dashboard tracks parent usage and outcomes. ReadyRosie is aligned with the Head Start Early Learning Outcomes Framework and the Parent, Family, and Community Engagement Framework. In Early Head Start, staff use Tadpoles, which provides real-time daily reports to parents about their child's routines and activities.





## THE DAD SHOW & FATHERHOOD INITIATIVES

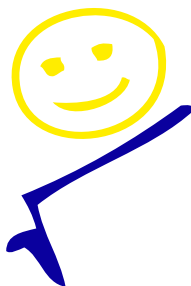
Fatherhood Initiatives are designed to provide families, with a concerted emphasis on fathers, with the tools to become caring, committed and responsible fathers and parents. The goals are achieved in a myriad of ways, including participation in the formally structured Dad Show and workshops (presented as a part of Game Night and a Valentine Daughter/Dad dance. Once the needs of fathers and families are assessed, Child Inc Family Advocates connected them to available community resources. The programs are open to all men who are interested in developing fathering skills.



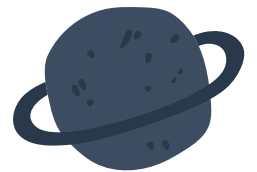
The Dad Show is a live, weekly radio show that airs every Tuesday at 6pm on KAZI Radio 88.7 FM. The Dad Show is hosted by Dr. Calvin Kelly, Chief Program Officer at Child Inc. Guests include: people with personal experiences, including fathers and parents who have children enrolled at Child Inc, community leaders, Child Inc staff as well as subject matter experts.

## THE DAD SHOW TOPICS & PROGRAMMING

- Head Start Then & Now
- The Role of Fathers in Student Success
- Addressing the Growing Mental Health Needs
- Sad-Seasonal Affective Disorder
- Child and Head Start Recruitment
- Financial Wellness and Wellbeing
- Addressing Debt
- Credit & You!
- Real Talk: What Makes a Successful Relationship Reunion (3 Part Series):
- Child Inc Alums, Where Are They Now!
- The Impact of Covid-19 & Communities of Color
- School Closures & the Impact Covid Disparities In Healthcare for Communities of Color
- Covid Deaths and the Political Response
- Community Experts Talk About Covid
- The Vaccine and Communities of Color (Part 1)
- The Vaccine and Communities of Color (Part 2) Will You Take It?
- Messenger RNA - Experts Break Down the Moderna & Pfizer Vaccines



XYZ





# PROGRAM SERVICE SITES

## EARLY CHILDHOOD DEVELOPMENT CENTERS - TRAVIS COUNTY

- 1 American Youth Works CDC\*\*
- 2 Brodie CDC\*
- 3 Cedar Bend CDC\*
- 4 Dawson CDC\*
- 5 Dove Springs CDC
- 6 Forbes CDC\*
- 7 Fountain Plaza CDC\*
- 8 Child Inc Main Office
- 9 Grant CDC\*
- 10 Mainsprings CDC\*\*
- 11 Palomita CDC\*
- 12 Rosewood Zaragosa CDC\*
- 13 South Austin CDC\*
- 14 St. James Episcopal CDC\* \*\*
- 15 Cook Elementary -- Austin ISD
- 16 Galindo Elementary -- Austin ISD
- 17 Graham Elementary -- Austin ISD
- 18 Harris Elementary -- Austin ISD
- 19 Ortega Elementary\* -- Austin ISD
- 20 Palm School -- Austin ISD
- 21 Pecan Springs Elementary --Austin ISD
- 22 Sims Elementary -- Austin ISD
- 23 Uphaus Elementary -- Austin ISD
- 24 Walnut Creek Elementary -- Austin ISD
- 25 Del Valle Elementary\* -- Del Valle ISD
- 26 Manor Elementary -- Manor ISD

\* NAEYC Accredited

\*\* Early Childcare Partnership Grant



# FINANCIAL REPORT

## EARLY HEAD START | HEAD START | CHILDCARE PARTNERSHIP GRANT

MAR 31, 2019 - APRIL 30, 2020

ACTUAL

BUDGET

### FEDERAL REVENUE

Revenue - Public - HHS HS & EHS	\$ 15,835,975	16,177,546
Revenue - Public - USDA CACFP	601,679	753,767
Revenue - Public - CDBG pass-through	77,573	77,573

**Total Federal** \$ 16,515,227 17,008,886

### LOCAL REVENUE

Revenue - Travis County	\$ 214,106	208,780
Revenue - COA/After School & Summer Programs	425,613	479,330

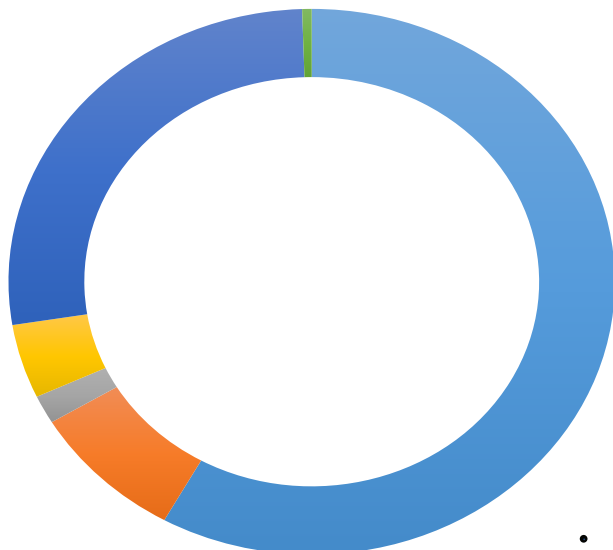
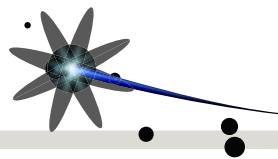
**Total Local** \$ 639,719 688,110

**Total Grant Revenue** \$ 17,154,946 17,696,996

Other Income \$ 1,462,092 990,703

**Total Support & Revenue** \$ 8,617,038 17,696,996

**IN KIND CONTRIBUTIONS** \$ 4,039,520 3,991,728



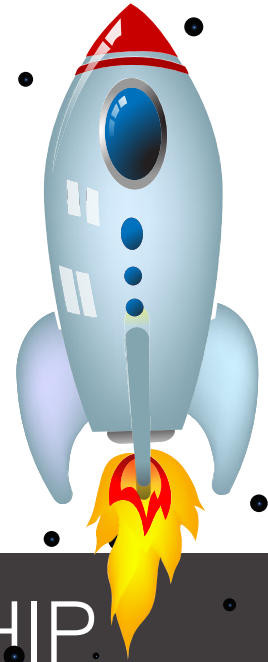
**EXPENDITURES**  
Actual  
\$21,196,436.00

Salaries	58%
Contract	8%
Equipment	2%
Supplies	4%
Other	27%
Travel	1%



## FEDERAL MONITORING

From April 6, 2020 to April 10, 2020, the Administration for Children and Families (ACF) conducted a Focus Area One (FA1) monitoring review of the Child Inc. Head Start and Early Head Start programs. The report reflects area of compliance for all indicators as required by the Administration for Children and Families-Office of Head Start. The complete report can be found on the Child Inc website. The report contains information about the grantee's performance and compliance with the requirements of the Head Start Program Performance Standards (HSPPS) or Public Law 110- 134, Improving Head Start for School Readiness Act of 2007. Full report available online at chilinc.org.



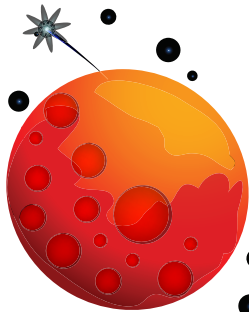
# PROGRAM LEADERSHIP

## POLICY COUNCIL 2019-2020

Policy Council Chairperson Mayhualida Arellano  
Council Vice Chair Jessica Flores  
Policy Council Secretary Maria Ayala

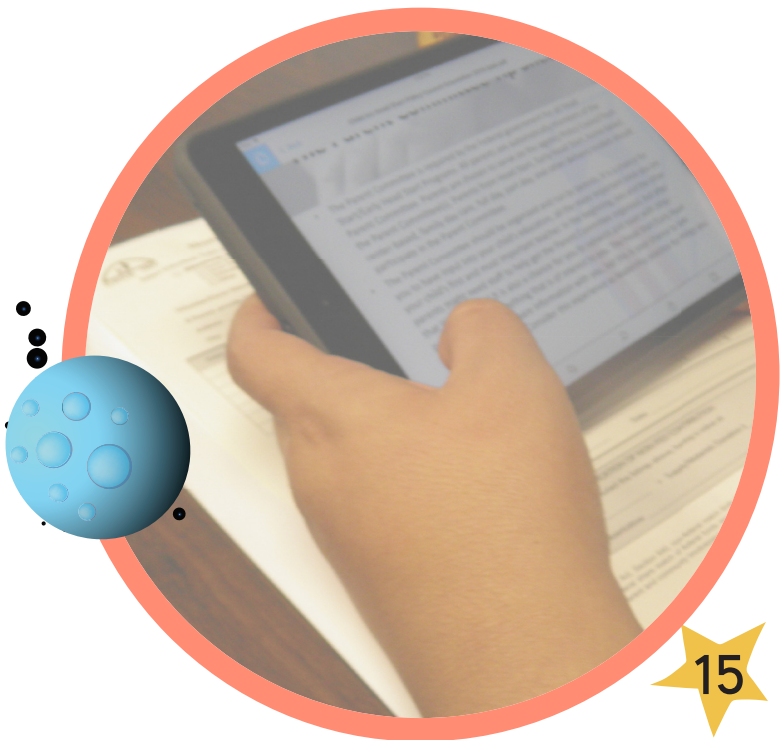
### *Representatives:*

Nancy Mendoza  
Kiara Escobar  
Kadedra Delille  
Lorena Cadenas  
Mayhualida Arellano  
Maria Ayala  
Nancy Pineda  
Jayro Lopez  
Yajaira Benitez  
Annette Carter  
Leslie Vega  
Jaimie Hill  
Karina Martinez  
Jessica Flores  
Corey Briley  
Alexis Frederick  
Kristy Torres  
Laura Garcia-Capilla  
Noemi Salazar  
Evelin Alvarez



## BOARD OF DIRECTORS 2019-2020

Cheryl Bradley. Chair  
Gwen Chance, Secretary  
Robert Langford, Member  
Lino Mendiola III, Esq., Member  
Joya Hayes, Member  
Naomi Gonzalez, Esq., Member  
Melvin White, Member  
Rhona Williams London, Board Advisory Rep.





## Child Inc.

818 East 53rd Street | Austin, TX 78751

512.451.7361 | [www.childinc.org](http://www.childinc.org) | [info@childinc.org](mailto:info@childinc.org) | [@childinctraviscounty](https://twitter.com/childinctraviscounty)

This report was prepared in compliance with the Head Start Reauthorization Act of 2007, Administrative Requirements and Standards Sec 644{42 U.S.C 0839 (a)(2)}.

Fully-audited financial statements prepared by abip, CPAs and Advisors for fiscal year ended April 30, 2020 are available at [childinc.org](http://childinc.org)  
Child Inc Head Start, a 501(c)(3) nonprofit tax-exempt Texas corporation.

